



**WORLD SAILING APPROVED SERIES PRODUCTION BOARD  
REGISTRATION - PART Ia  
CONFIDENTIAL**

This form shall be completed and returned to:

World Sailing Secretariat: **WORLD SAILING (UK) Ltd**, Ariadne House, Town Quay, Southampton,  
Hampshire, SO14 2AQ, United Kingdom Email: [Javier.blanco@sailing.org](mailto:Javier.blanco@sailing.org) Fax: +44 23 80635789

**Board Brand and Model** ..... **Model Year:** .....

**Contact Person/Title:** .....

**Company:** .....

**Address:** .....

**Telephone Number:** + ..... **Fax Number:** + ..... **Email:** .....

**We hereby inform you of the start of a production run of a minimum of 50 board per range (please tick as appropriate):**

**Wave/Freestyle Board** | | **Slalom/Speed Board**

**To to be distributed internationally, and that the board itself meets the requirements of the current International Funboard Class Rules** . The required quantities of 10 boards will be confirmed within three months by sending in Part II of this Registration, duly signed by the manufacturer. We accept that WORLD SAILING or a representative of WORLD SAILING may asks for proof of distribution and inspect the premises of production and we realise that non-compliance may result in the banning of this board from all IFCA events and further action as decided by WORLD SAILING.

**HULL Construction:** (may be referred to in case of a dispute)

\*Deck skin material: ..... \*Underside skin material: .....

Core material: ..... Internal structures: .....

\*If fibre reinforced plastic skins give brief details of type and quality of all reinforcements and resin used. Please complete the attached sheet in respect of the board specifications. The specifications detailed on this sheet will be the registered specifications for the board unless you advise otherwise.

**Volume** (displacement in water): .....

**Weight:** .....  
(Hull, including only mast-track and skeg box)

**Stiffness:** .....  
(Measured in accordance with WORLD SAILING recommended procedure)

**No. of footstraps:** .....

**Skegbox system:** Tuttle/Power/..... (other)

**We agree to supply only boards built in accordance with the above specifications and that the final weight and stiffness values shall be within tolerances of 5% and 10% respectively of the values recorded above** (the maximum weight and minimum stiffness limits shall apply only to boards in retail outlets, ie before being sailed). All boards produced will be supplied marked with WORLD SAILING logo (minimum height 3cm) and the text "WORLD SAILING Approved Series Production Funboard" as supplied by WORLD SAILING. We accept the final authority of WORLD SAILING on Measurement matters and accept the arbitration and decision of WORLD SAILING in this respect.

**Signature:** .....

**Name/Title:** .....

**Date:** .....

# WORLD SAILING APPROVED SERIES PRODUCTION BOARD REGISTRATION – PART 1b CONFIDENTIAL

This form shall be completed and returned to:

World Sailing Secretariat: WORLD SAILING (UK) Ltd, Ariadne House, Town Quay, Southampton,  
Hampshire, SO14 2AQ, United Kingdom –Email: [javier.blanco@sailing.org](mailto:javier.blanco@sailing.org) Fax: +44 23 80635789

Board Brand.....

Wave/Freestyle Board



Slalom/Speed Board

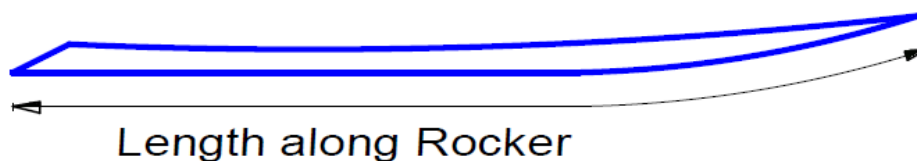
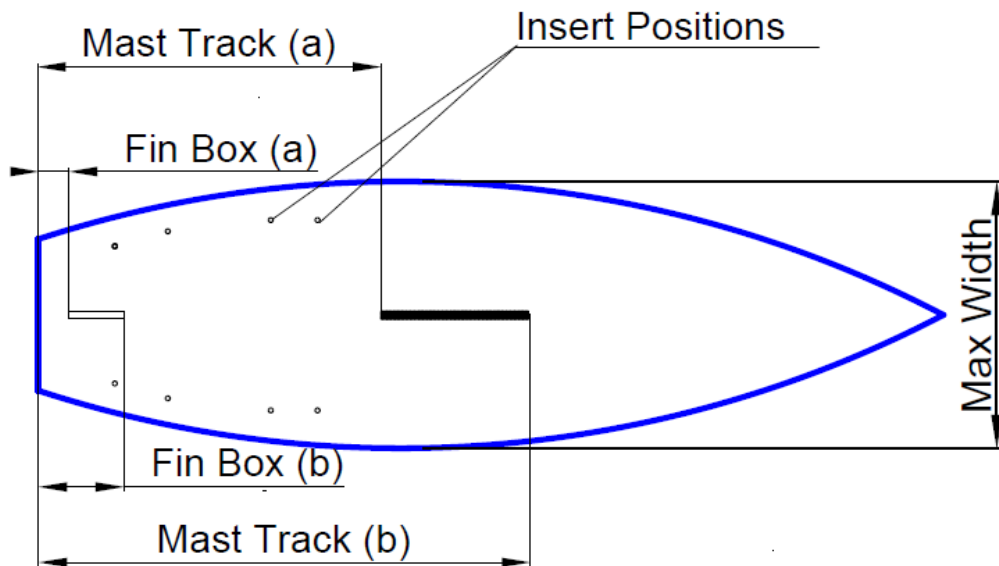


Model.....

Year: .....

Measurements for the board should be taken as shown in the diagrams:

ITEM	MEASUREMENT in Millimetres
Length - along rocker	
Width – maximum	
Fin box slot (a)	
Fin box slot (b)	
Mast Track slot (a)	
Mast Track slot (b)	



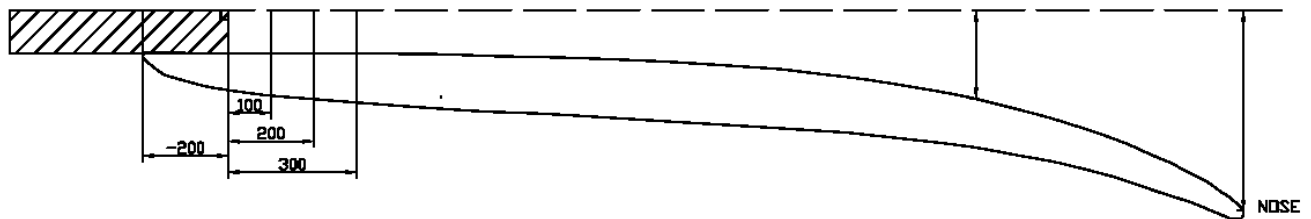
**WORLD SAILING APPROVED SERIES PRODUCTION BOARD  
REGISTRATION - PART Ib continued  
CONFIDENTIAL**

This form shall be completed and returned to:

**World Sailing Secretariat: WORLD SAILING (UK) Ltd, Ariadne House, Town Quay, Southampton,**  
Hampshire, SO14 2AQ, United Kingdom -Email: [javier.blanco@sailing.org](mailto:javier.blanco@sailing.org) Fax: +44 23 80635789

**BOARD DECLARATION** - Builders are to submit detailed dimensions of their board on the **Hull Check Sheet** as follows:

With the board upside down mark off the hull at 100mm intervals, starting 200mm from the tail/ transom as shown in the figure below. Then, set up a spirit level laser pointing down the length of the board, with the beam starting at the 0 station, 200mm from the tail. Then measure at each station vertically to find the rocker measurements. . Correct the dimension to allow for the height of your reference beam above the hull at station 0.



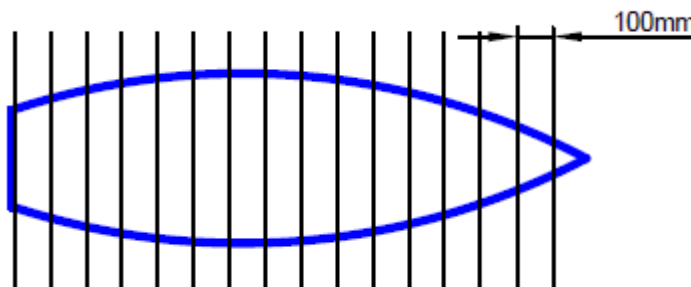
**Vee and Concave**

The vee and concave measurements are taken using a straight edge laid across the hull.



**Width Measurements**

The maximum width is taken at the start. Take the width measurements at 100 mm intervals along the whole board length as shown below. Take the 200, 800, 1100 station widths as a final check.



**WORLD SAILING APPROVED SERIES PRODUCTION BOARD  
REGISTRATION - PART II  
Request for Inspection**

**CONFIDENTIAL - TO BE COMPLETED BY THE FUNBOARD MANUFACTURER**

This form shall be completed and returned to:

World Sailing Secretariat: WORLD SAILING (UK) Ltd, Ariadne House, Town Quay, Southampton,  
Hampshire, SO 14 2AQ, United Kingdom- Email: [javier.blanco@sailing.org](mailto:javier.blanco@sailing.org) Fax: +44 23 80635789

**MANUFACTURER'S DECLARATION**

**Board/Brand Name:** .....

I confirm that all the specifications (length, width, volume, weight, stiffness) of the board named above **are as specified in the Part I a and b form, except as detailed below:**

Amendments to specifications in **Part I:** .....  
.....

**I declare** that I have produced at least 10 boards of the above named model.

**The boards can be inspected at the following factory:**

**Company:**

**Address:**

**Country:**

**Name of contact at factory:**

**Tel:**

**E.mail:**

A copy of the company promotional brochure which includes full details of the board described in Part I, together with clear visual representation of these may be enclosed herewith.

**Signature:** ..... **Title:** ..... **Date:** ...../201